

▲ Panel cutout area is 138x138mm

Billion SG3120 Clip-on CT Smart Power Meter

Smart transducer with easy installation, cost-effective and large recording capacity

The Billion SG3120 is designed to use in electric power monitoring and load recording for single or three phase systems. It can be directly used in low voltage systems due to its wide range measurement (up to 200A). The Billion SG3120 can also maintain better than 1% (IEC62053-21) accuracy even under low current condition (< 5A), thus it still can be used in middle to high voltage system. The unique features of the Billion SG3120 include clip-on CT, bi-directional measurement, long-time load recording, and standard communication. Its compact size, cost-effective and easy-installation features make the Billion SG3120 ideal for the modern electricity monitoring and load investigation.

- Clip-on CT, easily wiring especially for on-line installation
- Wide measurement range 10 (60) A, max to 200A (24Ø) suitable for low voltage system
- Wh accuracy better than 0.5% (pf=1)
- Up to 10000 load profile records with configurable recording period
- RS485 communication interface supports Modbus protocol
- Wh pulse output which can be connected to standard meter tester

Specifications

Type

- 3 phase 3(4) W, 110/220V, 50/60Hz

Rating

- Base current (Ib) 10A, I_{max} 60A, option in CT Ø 16mm (100A), CT Ø 24mm (200A)

kWh Accuracy

- pf=1, <0.5%, pf=0.5 <1%, better than IEC62053-21

Starting Current

- <0.001I_b

Display

- Mono LCD

Comm I/F

- Auto detection, 1P2W, 1P3W, 3P3W-2CT, 3P3W-3CT, 3P4W

Wiring

- RS485 with Modbus protocol
- Baud Rate : 9600, 19200

Load profile

- 2 groups, group 1 max. 8 channels, group 2 max. 4 channels
- Programmable recording interval for each group
- Max store : 104 days (interval = 15 mins) / channel (in group1 8 channels or group2 4 channels)

Battery

- LiSOCl₂, 950 mAhr for RTC

Measure

- VA-N, VB-N, VC-N, VL-Nave
- VA-B, VB-C, VC-A, VL-Lave
- I A, I B, I C, I ave
- PFA, PFB, PFC
- kWA, kWb, kWc, kWtot
- kvarA, kvarB, kvarC, kvartot
- kVAA, kVAB, kVAC, kVAtot
- Wh+, Wh-, VARh+, VARh-, Vah
- Hz

Surge Winstand

- PEN61000-4-5

LVD Test

- EN61010-1

Size

- 110(L) × 75(W) × 120(H) mm

Operation Temp

- 0°C ~ 50 °C

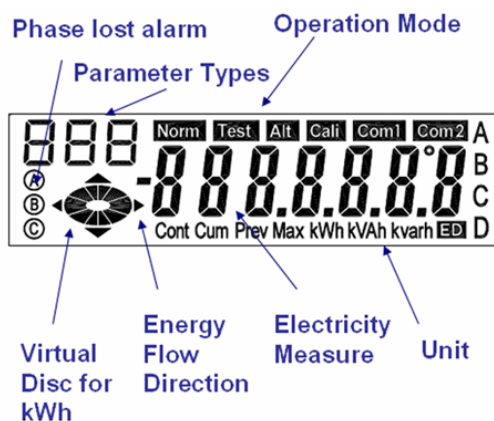
Operation Temperature

- Rail-mounted

Terminals

- 2 × 10 terminals, IP20

LED Display and Ordering Code



SG3120 - □

10 : CT Ø 10mm (standard)

16 : CT Ø 16mm (option)

24 : CT Ø 24mm (option)

Notes:
Specifications in this datasheet are subject to change without prior notice.

V.03012010